

# NEW MEMBER ONBOARDING

Spokane County  
United Way  
**Emerging**  
LEADERS  
SOCIETY



Contact Us and Learn more

*Complete Form*



CONNECT WITH THE  
MEMBERSHIP COMMITTEE



WELCOME MESSAGE  
& COFFEE MEETING

**YOU'RE IN!**



FIND YOUR FIT  
BY JOINING  
A COMMITTEE

*Pair up with  
an ELS mentor*



## Emerging Leaders Society



## Mission Statement

To create measurable community impact by engaging and developing philanthropic leaders through our partnership with United Way.

The Emerging Leader Society works hand in hand with Spokane County United Way to accomplish its mission, while providing volunteering, community engagement, and professional development opportunities:

### **Volunteering & Community Engagement**

- Create opportunities for meaningful and unique engagement with community and non-profit organizations
- Provide members exposure and a better understanding of the nonprofit community in Spokane County
- Host multiple all-member events and meetings
- Leveraging our network for philanthropic impact

### **Professional Development**

- Provide opportunities for leadership development through board involvement
- Exposure to other like-minded professionals and their respective industries
- Provide opportunities to initiate, support, and lead ELS events and activities through specific committee service
- Conduct regularly scheduled monthly meetings of the Board
- Provide CEO networking opportunities



## Events and Volunteering

ELS is proud to provide a number of professional development opportunities, networking events, and volunteer opportunities throughout the year. Third Thursday schedule beginning in September. Going forward, all events will be hosted on the Third Thursday of each month.

Our 2021 - 22 events include:

- Serving with CEOs Events (Multiple Dates)
- Foot Golf Tournament (August 27, 2021)
- Spokane Philanthropy Awards (October 19, 2021)
- Jingle 'n Mingle (December 16, 2021)
- Annual Kickoff (January 20, 2022)
- 3 on 3 Basketball Tournament (March 10, 2022)
- Annual Meeting (May 19, 2022)
- Beers with Peers (July 21, 2022)

We also frequently present volunteer opportunities with United Way's Partner Agencies and Programs. And we have a heck of a fun time doing it!



## Benefits of Being an ELS Member

- Whitworth MBA admission and discount
- Exposure to area non-profits
- Exposure to community and industry leaders and working side by side with the next generation of leaders
- Leadership development

## Commitment From You

To be considered and recognized as a member of the United Way Emerging Leaders Society of Spokane, an individual can participate in any one of the following contribution tier platforms through their workplace campaign or by [donating directly with United Way](#).

Contribution Tiers

Tier 1: A minimum financial contribution of \$1,000 and 10 hours of volunteer time annually.  
(Includes recognition in United Way Leadership Registry)

Tier 2: A minimum financial contribution of \$500 and 25 hours of volunteer time annually.

Tier 3: A minimum financial contribution of \$250 and 50 hours of volunteer time annually.

## Next Steps – Get Connected

Visit us at [UnitedWaySpokane.org/EmergingLeadersSociety](https://UnitedWaySpokane.org/EmergingLeadersSociety) to learn more

- Complete your application
- Sign up for the ELS Newsletter
- Meet with a member of the membership committee
- Create your account on [VolunteerSpokane.org](https://VolunteerSpokane.org) and download the Volunteer Get Connected app
- Attend events and volunteer opportunities
- Join a committee (Events, Marketing, Membership, Spokane Philanthropy Awards, Volunteer)
- Follow us on [Facebook](#) and [Instagram](#)

# Board



Courtney Altringer  
Wells Fargo Advisors



Emily Arneson  
Spokane Transit  
Authority



JJ Brown  
Community Volunteer



Roshelle Cleland  
Lutheran Community  
Services Northwest



Kelly Hewson  
Keller Williams Realty



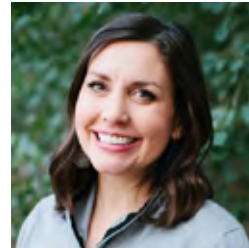
Cody Hines  
Washington Trust Bank



Kaileen Kersting  
Hospice of Spokane



Liza Kovalenko  
Witherspoon Kelley



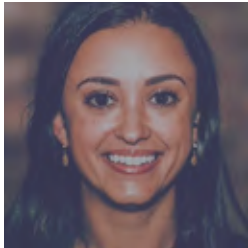
Buffy Nustad  
STCU



Kaitlyn Richardson  
Avista



Heather Schmitt  
Gonzaga University



MJ Spadfora  
Gonzaga University



Heather Sulpizio  
Providence Health &  
Services



Rebecca Swenson  
US Bank



Sinéad Voorhees  
Whitworth MBA



Tyler West  
Northwest Farm Credit  
Services



Matt Wetzel  
Gallagher

## ELS Committee Meetings 2021-2022

### Events Committee

**Chair:** Rebecca Sumner  
[rebecca.sumner@usbank.com](mailto:rebecca.sumner@usbank.com)  
**Co-Chair:** Justin Reed  
[justin.reed15@gmail.com](mailto:justin.reed15@gmail.com)

**Location:** Zoom  
**Time:** 12:00pm-1:00pm, 3rd Wednesday of each month  
**Description:** Planning and hosting a number of events centered on networking, volunteerism, professional development or some combination of the three.

### Marketing Committee

**Chair:** JJ Brown  
[juliabrown99206@gmail.com](mailto:juliabrown99206@gmail.com)  
**Co-Chair:** Kaitlyn Richardson  
[kaitlyn.richardson@avistacorp.com](mailto:kaitlyn.richardson@avistacorp.com)

**Location:** Zoom  
**Time:** 4 - 5pm, last Wednesday of each month  
**Description:** Coordinating with all committees to provide marketing support and the continued development of a unified brand.

### Membership Committee

**Chair:** Kelly Hewson  
[kellyshewson@gmail.com](mailto:kellyshewson@gmail.com)  
**Co-Chair:** Position open

**Location:** My Fresh Basket (1030 W. Summit Pkwy)  
**Time:** 12:00pm-1:00pm 2nd Monday of each month  
**Description:** Onboarding, development and retention of members to increase their personal growth and benefits within ELS.

### Spokane Philanthropy Awards Committee

**Chair:** Roshelle Cleland  
[rcleland@lcsnw.org](mailto:rcleland@lcsnw.org)  
**Co-Chair:** Position open

**Location:** Revival Tea Company (415 W. Main Ave., Suite 100)  
**Time:** 1:30 - 2:30pm, 3rd Friday of each month  
**Description:** Full scale event planning for ELS's signature event that recognizes outstanding community commitment from businesses and individuals.

### Volunteer Committee

**Chair:** Kaileen Kersting  
[kekersting@gmail.com](mailto:kekersting@gmail.com)  
**Co-Chair:** Position open

**Location:** My Fresh Basket (1030 W. Summit Pkwy)  
**Time:** 4:30 - 5:30pm, 3rd Monday of each month  
**Description:** Executes volunteer and community engagement activities throughout the year for ELS members.



**WHITWORTH**  
UNIVERSITY

# MBA DIRECT ADMISSIONS

## Emerging Leaders Society



Whitworth University is partnering with the Spokane County United Way Emerging Leaders Society to offer direct admissions to Whitworth's MBA program for eligible ELS members.

### ELS MEMBERS ELIGIBLE FOR DIRECT ADMISSIONS

- Executive Board members
- Active sub-committee members, as determined by committee lead

### WAIVED APPLICATION REQUIREMENTS

- Essay
- Professional recommendations
- GMAT
- Application fee
- Résumé
- Admissions interview

### REQUIRED FOR GRADUATE ADMISSION

- Application form
- Proof of accredited bachelor's degree (official transcripts)